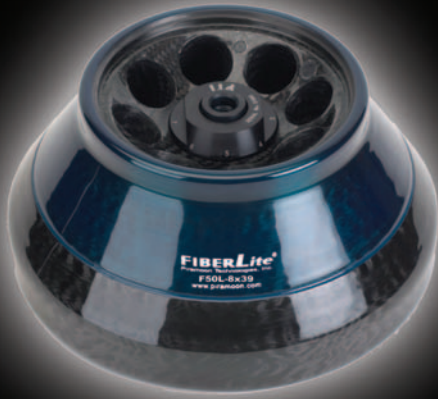


F50-8x39 mL

Fixed Angle Carbon Fiber Rotor

8x39 mL



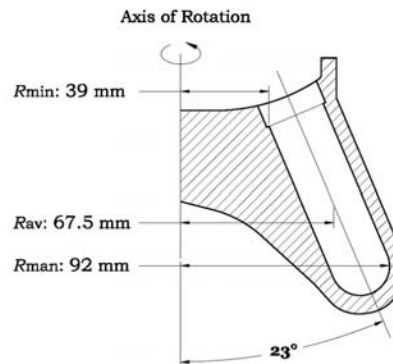
for
**Sorvall and Beckman
Ultra Centrifuges**

Features

- Lifetime warranty
- Safer than metallic rotors
- Corrosion free
- Competitively priced
- Cold room compatible
- Easy to handle
- Fully autoclavable
- Reduced wear on centrifuge drive
- Rapid acceleration and deceleration
- Highly resistant to radiolabel contamination

Applications

- Subcellular organelle separations
- Pelleting of microsomes



Specifications

- Max. Speed: 50,000 rpm
- Max. g-force: 257,600 x g
- Max. radius (r_{max}): 92 mm
- Min. radius (r_{min}): 39 mm
- Tube Angle: 34°
- k factor: 87
- Rotor Capacity: 8 x 39 mL (312 mL)
- Max Tube Size: $\phi 29 \times 105$ mm (1.13 x 4.0 in.)
- Rotor Mass: 3.63 kg (8.0 lbs.)
- Liquid Containment: No

Unique Features:

- Multipurpose high g-force ultra speed rotor
- Pelleting gradient studies

For Sorvall Ultra Centrifuge

For Beckman Ultra Centrifuge

FIBERLite Rotor Model	F50-8x39 mL	F50-8x39 mL
FIBERLite Part No.	096-087051	096-087051
Will Spin In	OTD/Discovery/Ultra Pro 80	L Series
Will Replace	A-841	Type 50.2 Ti
Rotor Accessories and Replacement Parts		
Lid Assembly	099-087051	096-087051
O-Ring Refresher Kit	021-087051	021-087051

Ultra

Recommended Bottles with Cap Assemblies

Tube Style Material	Part No.	Volume (Nominal)	Tube Manufacturer Recommended g-Force
Polycarbonate (Set of 2)	010-0514	38.5 mL	118,944 x g

Recommended Adapters

010-1139 39 mL to 3x1.0 mL		010-1141 39 mL to 3.0 mL		010-1142 39 mL to 13.5 mL	
----------------------------------	---	--------------------------------	---	---------------------------------	---