

# Benchtop Low-speed Large-capacity Centrifuge

## LX-60T500-J



### Scope of Application :

Specifically designed for routine sample processing of serum, plasma, whole blood and other body fluids, rapid sedimentation of protein precipitates and processing of samples for in-vitro cytotoxicity studies.



Wide range of rotors for application flexibility, compatible with tubes/bottles from 0.2 ml to 500ml.



Patented anti-seismic door lock



Real time loading imbalance detection, immediate shutdown protection in case of imbalance

#### Haier Biomedical Co.,Ltd.

No.280 Feng Yuan Road, High-tech Zone,  
Qingdao, 266109, P.R. China  
E-mail: inquiry@haierbiomedical.com  
Website: www.haiermedical.com



Haier Biomedical  
International



Haier Biomedical  
International



@haiermedicalint



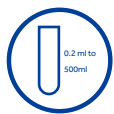
Haier Biomedical  
International



Haier Biomedical  
International



**Product Features**



Wide range of rotors for application flexibility, compatible with tubes/bottles from 0.2 ml to 500ml



Automatic rotor identification with over speed protection



Use of brushless induction motors to provide maintenance-free operation, eliminating carbon particle emissions



Real time loading imbalance detection, immediate shutdown protection in case of imbalance



Optimized sound design for low noise levels( $\leq 65$ dB at max speed)



Each rotor use frequency monitoring to guarantee maximum operational safety

**Intuitive Interface**



LED keypad and control knob for easy operation , the wide viewing angle more comfortable and practical for users of all heights



Quick recall of up to 99 programs for quick run start by routine users



9 acceleration + 10 deceleration stages



The speed, centrifugal force, time and temperature can be changed by user during the centrifugation process

Target speed/centrifugal force/time and real-time operation data display.

Screen lock function to prevent press errors



One key to recall stored programs for more convenient operation

Acceleration/Deceleration rates



**Product Parts**



Patented anti-seismic door lock. In case of abnormal vibration, the cover can be locked reliably

Unique air duct structure design, the heat inside the centrifugal chamber can dissipate quickly

Motorized gas springs with safety protection

Triple-layer construction to ensure safe use

USB port for exporting operation record including speed, time and temperature, operation curve with alarm messages etc

316 stainless steel centrifuge chamber is rust-free and easy to clean

**Specifications**

Model	Maximum Capacity (ml)	Speed Range (rpm)	Max RCF(xg)	Speed Accuracy	Time Setting Range	Display	Noise(dB)	Power Supply
LX-60T500-J	4*500ml	500~6000	5353	±10rpm	1s~99h59m59s (1-second increment)	LED	≤65 at max speed	AC220/50/60

Power(W)	Exterior Dimensions (W*D*H)(mm)	Lid Opening Height (mm)	Net Weight (kg)	Packing Dimensions (W*D*H)(mm)	Gross Weight (kg)	Certifications
700	478*624*365	840	60	560*752*562	75	CE

\*Haier Biomedical reserves the right to change products and specifications without prior notice.



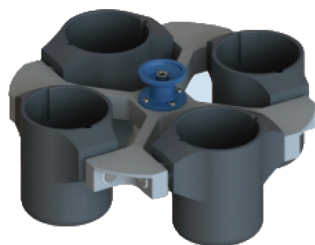
**Fixed-Angle Rotor**



BE No.	BE12DA000	BE12D7000	BE12C8000	BE12D8000	BE12D9000	BE12DQ000
Type	Steel sleeve	Steel sleeve	Steel sleeve	Steel sleeve	Steel sleeve	Steel sleeve
Max Capacity (ml)	6*50 (15)ml	12*50 (15)ml	12*15ml	42*15ml	10*100ml	60*10ml
Max RCF (xg)	5353	4528	5353	4528	3260	2576
Max Speed (rpm)	6000	5000	6000	5000	4500	4000
Max Tubes Per Rotor	6 pcs(50ml) 6 pcs(15ml)	12 pcs(50ml) 12 pcs(15ml)	12	42	10	60
Tube						
Max Tube Capacity (ml)	50 (15)ml	50 (15)ml	15ml	15ml	100ml	10ml
Max Tube Dimensions (Ø x L mm)	29.5*118 17*121	29.5*118 17*121	17*121	17*121	41*118	15*105
Tube Type	Round/Conical bottom	Round/Conical bottom	Round/Conical bottom	Round/Conical bottom	Round bottom	Round bottom with attached snap cap



**Swing-out Rotor**



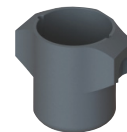
Swing-out rotor with round buckets

Swing-out Rotor Block



<b>BE No.</b>	<b>BE12FK001</b>
<b>Max. RCF</b>	3220xg
<b>Max. speed</b>	4000rpm

Round Bucket (Sets of 4)



<b>BE No.</b>	<b>BE12G0000</b>
<b>Max Capacity</b>	500ml
<b>Bucket Type</b>	Flat bottom

Adapter (Sets of 4) for BE12G0000



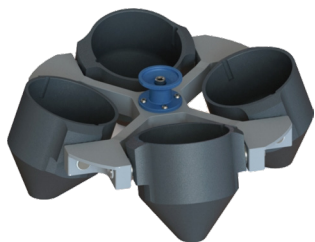
BE No.	No Adapter Needed	BE12JP001	BE12FG001	BE12FF001	BE12JS001
<b>Max Capacity (ml)</b>	500ml	250ml	225ml	100ml	4*50ml
<b>Tubes Per Adapter/Rotor</b>	4	1/4	1/4	1/4	4/16
<b>Tube</b>					
<b>Max Tube Dimensions (Ø x L mm)</b>	80*136	62*123	60*136	38*106	29.5*118
<b>Tube Type</b>	Flat bottom	Flat bottom	Conical bottom	Round bottom	Conical bottom

Adapter (Sets of 4) for BE12G0000



BE No.	BE12JR001	BE12JQ001	BE12JD002	BE12JE002
<b>Max Capacity (ml)</b>	10*15ml	14*10ml	19*5/7ml	30*1.5/2ml
<b>Tubes Per Adapter/Rotor</b>	10/40	14/56	19/76	30/120
<b>Tube</b>				
<b>Maximum Tube Dimensions (Ø x L mm)</b>	17*121	15*105	12*80/105	11*38
<b>Tube Type</b>	Conical bottom	Large blood collection tube	Small/Large blood collection tube	Round/Conical bottom

\*Haier Biomedical also can provide 0.2ml adapter (sets of 24) (BE12J2003) , 0.5ml adapter (sets of 24) (BE12JN002) for 1.5/2ml tube rotor.

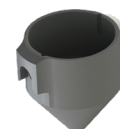


Swing-out rotor with conical buckets

Swing-out Rotor Block



Conical Bucket (Sets of 4)





BE No.	BE12FK001
Max. RCF	3220xg
Max. speed	4000rpm

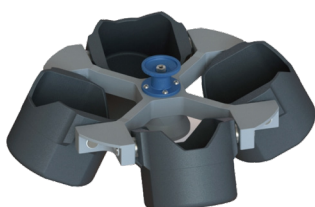


BE No.	BE12G1000
Max Capacity	500ml
Bucket Type	Conical bottom

Adapter (Sets of 4) for BE12G1000



BE No.	No adapter needed	BE12JB002
Max Capacity (ml)	500ml	250ml
Tubes Per Adapter/Rotor	4	1/4
Tube		
Max Tube Dimensions (Ø x L mm)	94*150	60*165
Tube Type	Conical bottom	Conical bottom

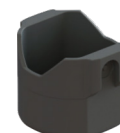


Swing-out rotor with square buckets

Swing-out Rotor Block



Square Bucket (Sets of 4)




BE No.	BE12FK001
Max. RCF	3220xg
Max. speed	4000rpm

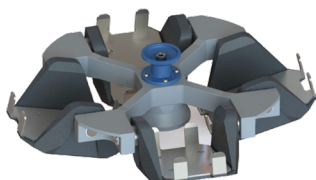


BE No.	BE12HA000
Max Capacity	500ml
Bucket Type	Flat bottom

Decap adapter (Sets of 4) for BE12HA000



BE No.	BE12JV001
Max Capacity (ml)	24*5/7ml
Tubes Per Adapter/Rotor	24/96
Tube	
Max Tube Dimensions (Ø x L mm)	12*80/105
Tube Type	Small/Large blood collection tube



Swing-out rotor with plate buckets

Swing-out Rotor Block



BE No. **BE12FK001**

Max. RCF 3220xg

Max. speed 4000rpm



Plate Bucket (Sets of 4)

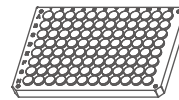
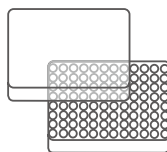
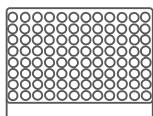


BE No. **BE12H5000**

Max Capacity 1 plate

Bucket Type Rectangular bottom

Plates for BE12H5000



Plates per rotor **4** **4** **4**

W\*D\*H (mm) 128\*86\*15 128\*86\*17.5 128\*86\*20

Plate Type MTP (without lid) MTP (with lid) PCR plate 96-fold