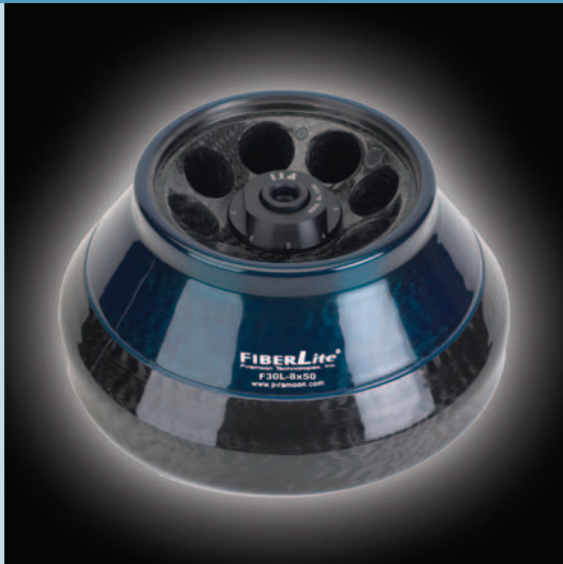


F30-8x50 mL

Fixed Angle Carbon Fiber Rotor

8x50 mL



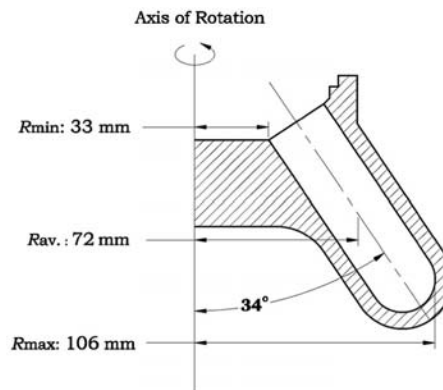
for
**Sorvall and Beckman
Ultra Centrifuges**

Features

- Lifetime warranty
- Safer than metallic rotors
- Corrosion free
- Cold room compatible
- Easy to handle
- Fully autoclavable
- Reduced wear on centrifuge drive
- Rapid acceleration and deceleration
- Highly resistant to radiolabel contamination

Applications

- Subcellular organelle separations
- Pelleting of microsomes



Specifications

- Max. Speed: 30,000 rpm
- Max. g-force: 106,848 x g
- Max. radius (r_{max}): 106 mm
- Min. radius (r_{min}): 33 mm
- Tube Angle: 34°
- k factor: 328
- Rotor Capacity: 8 x 50 mL (400 mL)
- Max Tube Size: $\phi 29 \times 105$ mm (1.13 x 4.0 in.)
- Rotor Mass: 4.43 kg (9.78 lbs.)
- Liquid Containment: No

Unique Features:

- Multipurpose ultra speed rotor
- Pelleting and density gradient separations of subcellular organelles

For Sorvall Ultra Centrifuge

For Beckman Ultra Centrifuge







Ultra

FIBERLite Rotor Model	F30L-8x50 mL	F30L-8x50 mL
FIBERLite Part No.	096-087021	096-087021
Will Spin In	OTD/Discovery/Ultra Pro 80	L Series
Will Replace	A-841	Type 28
Rotor Accessories and Replacement Parts		
Lid Assembly	099-087021	099-087021
O-Ring Refresher Kit	021-087021	021-087021

Recommended Bottles with Cap Assemblies

Tube Style Material	Part No.	Volume (Nominal)	Tube Manufacturer Recommended g-Force
Polypropylene (Set of 2)	010-0332	50 mL	50,000 x g
Polycarbonate (Set of 2)	010-0507	50 mL	50,000 x g

Recommended Adapters

010-1127 50 mL to 4x1.0 mL		010-1128 50 mL to 3.0 mL		010-1068 50 mL to 8.0/10 mL		010-1144 50 mL to 12 mL	
010-0382 50 mL to 15 mL		010-1123 50 mL to 15 mL Conical		010-0167 50 mL to 30 mL	